

CONTACT US:

Shelia Lee
1715 Market St.
Galveston, TX 77550
409-621-5571
cell: 281-788-6667

email: shalee@utmb.edu

See More Details at:
www.anet4u.com/thecaptain

The Captain

East End Historical District Sleeps 18+

5 short blocks to Stewart's Beach



DETAILS

Rental Policy: We rent to families and Companies. The responsible Guest must be 25 years of age to register and will be held responsible for the condition of the house when the rental period is over. Any use of our home for purposes other than small corporate rentals (with meetings), family vacations, or wedding families must be approved at the time of the reservation. We **DO NOT** rent to unsupervised prom groups, school groups, spring break groups, fraternities, or sororities.

Check-In/Check-Out: Weekend and Weekday rentals are available for arrival (after 3 pm) and (before 11 am). Weekly rentals can start on any date that includes one weekend. 2-night min. required and weekend rate will be charged for any combination including Fri & Sat.

Reservation, Deposits, and Payment Methods: Advance reservations required with \$250 refundable Security Deposit. Holidays require 50% of full rental charges to be paid 14 days in advance with balance paid at check-in. We accept Cash, Credit Cards (+3%), or company checks only. Deposits will be refunded at checkout (via credit card credit or check) after inspection of home for any damage or loss.

Cancellation Policy: Cancellations are required more than 30 days before the arrival date and are subject to a \$25 cancellation fee, refunded within 5 days of the cancellation date. Cancellations within 30 days will forfeit the deposit (but not any advance rental payment)

Smoking: Smoking allowed on the roof patio, Hot Tub, and Garage areas only. Please do not throw ashes or butts from the roof, on garage floor or in Hot Tub area. Smoking inside the house will result in loss of the entire security deposit.

Pets are Allowed: There is a \$25 non-refundable charge for pets. The backdoor even has a small doggie door to the small fenced backyard.

FURNISHED:

Central AC & Heat, Washer & Dryer, Dishwasher, Microwave, Gas Range
10 cup coffee maker with filters & Coffee AND Professional Belgium Waffle maker
Elec. Can opener, Electric Wisk, Wok, blender & large slice Toaster
Table Service (flatware, carving knives, dishes, glasses, etc)
Cookware (large, med. & small pots), mixing & serving bowls
Bake ware (corning dishes, cookie sheets, pizza pan, 8" & 12" brownie tins
Some Paper products (Toilet, Towels, Napkins) & Trash bags
Some Foil, Plastic wrap, lunch baggies, etc.
Some Detergent & Cleaning Products, Liquid Bath soap & shampoo
ALL Bed Linens, beach, bath, hand, & dishtowels, washcloths – furnished **FREE**
Baby play yard and high chair
FREE LONG DISTANCE Telephone service, Digital Cable & VCR/DVD with library
FREE WIRELESS INTERNET, Charcoal Grill & utensils & Deck Chairs
Board Games, Electric Keyboard, and Nintendo 64 w/games & rumble packs
Indoor Jacuzzi 8 person Hot Tub



1002 Sealy, Galveston, TX, 77550

Come and enjoy the great atmosphere at The Captain – Galveston's only East End Historic District Resort Rental.



2006-7 RATES - Multi-night SPECIALS

Peak Season = Summer (4/21 to 9/23/2006 & 4/13/07 to 9/29/07) Weekend - \$750 Weekly - \$1875
Sunday through Thursday night - 2 nights \$525, 3 nights \$775, 4 nights \$995, and 5 nights \$1195
Mid Season = (9/11 to 11/25/2006 & 3/2/07 to 4/12/07) Weekend \$650 Weekly \$1675
Sunday through Thursday night - 2 nights \$450, 3 nights \$650, 4 nights \$840, & 5 nights \$1025
Low Season = Winter (11/26/06 to 03/1/07) Weekend \$550 Weekly \$1425
Sunday through Thursday night - 2 nights \$400, 3 nights \$575, 4 nights \$745, & 5 nights \$895
(Dickens, Christmas, New Years & Mardi Gra - at Mid Season Rates)

Minimum - Two Day Stay w/Exception: less than 5 day advanced reservation and dates are available & weekly rentals cannot begin or end on Saturday.

Rates+ 15% Hotel Tax

Plus \$250 Security required to hold your date (Fully refundable at check out) and \$25 Pet non-refundable Fee

ADD \$75 any day for our PAMPER SERVICE with Gourmet Breakfast for up to 12 persons. \$2.50 for each add'l

No additional fees for Linens or Cleaning.





Want to **EXPERIENCE Historic Galveston?**

Rent the entire HOUSE for the week or weekend.

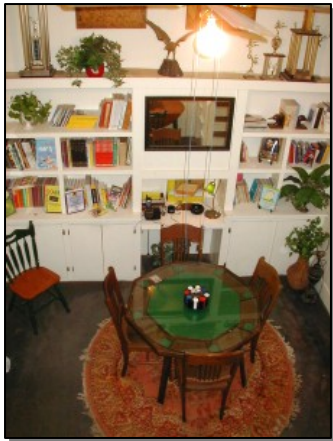
It is just like going to Grandma's house but you have the place to yourself!



The History of this gorgeous home: **built before 1880**, survivor of the **Great 1900 Hurricane**, originally a corner store with the owners living on the 2nd & 3rd floors and located in the **East End Historical District** one block off Broadway.

We are not furnished ALL FLUFFY – like a typical Bed and Breakfast but still have the antiques!

And we are not HUM-DRUM like a Holiday Inn or other Beach rental. The character of this “**Old Corner Store**” comes through in the old SODA FOUNTAIN BAR Kitchen, and eclectic decorations. 2 full baths – 1st & 2nd floor.



There are two bedrooms on the 2nd floor with two additional bedrooms on the 3rd floor and sleeps 18+ adults (1K, 4Q, 2T, 3 Dbl Futons, Q-Sofa Bed & 3 other Sofas).

NO BUNK-BEDS

The yard is a small wrap-a-round garden with beautiful decorations of seashells and birds.



FAMILY & CLASS REUNIONS / CHURCH RETREATS / CORPORATE / CONVENTIONS / CHRISTMAS / MARDI GRAS / DICKENS ON THE STRAND / CHARTER FISHING TRIPS

We definitely do not have a Typical Home in the Historic District!



Roof Patio: The 4th floor roof patio – is the “Talk of the neighborhood!” and offers a panoramic view of the entire city, beach, and harbor.

Hot Tub: We have a large Hot Tub! *This is a pleasure all our guests love the most!* The hot tub is indoors and fantastically decorated with a ship’s wheel and ceiling fan. It has Jacuzzi jets and 4 cycle combinations with and without heat.



MAY WE SUGGEST:

WEDDINGS: There is a Wedding Chapel 2 blocks from the house on Broadway and we can arrange a Horse-Drawn Carriage!

CRUISE VACATIONS: Extend your Cruise Vacation by arriving a few days early for your cruise. Enjoy the Island’s antique shopping and even take in a concert at the **GRAND OPERA HOUSE**.

FREE PARKING – and we can arrange transportation to and from the Cruise Terminal for you.

FISHING – Pier 4 blocks from The Captain.



Now featuring a **QUEEN CRAFTMATIC** adjustable bed in the Master Bedroom.

If you live in the Houston and surrounding area and would like to hear about this great bed and even sleep on it – We will discount your stay.

